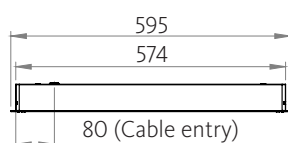


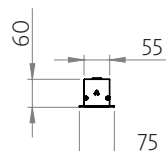
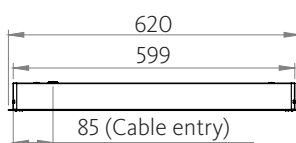
Sevede RE

Installation manual

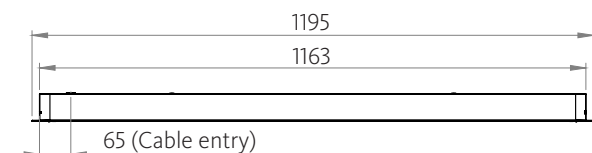
Sevede RE 600



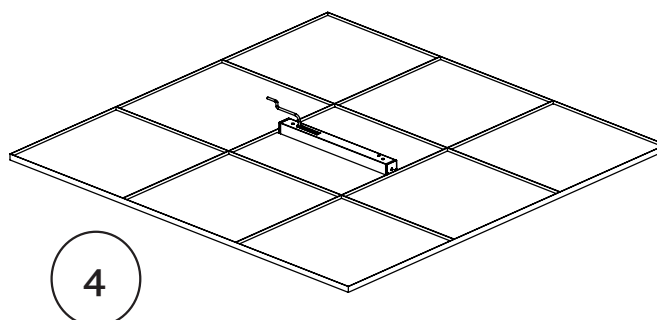
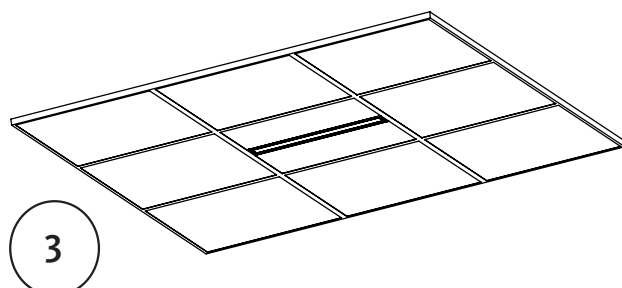
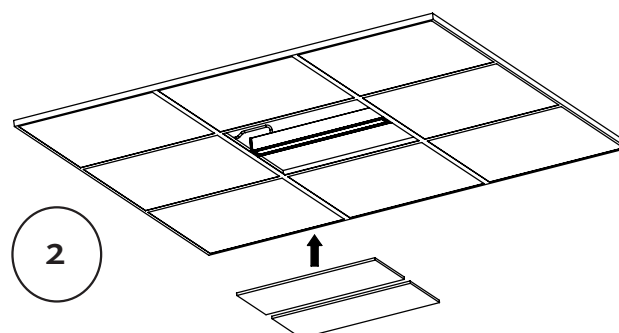
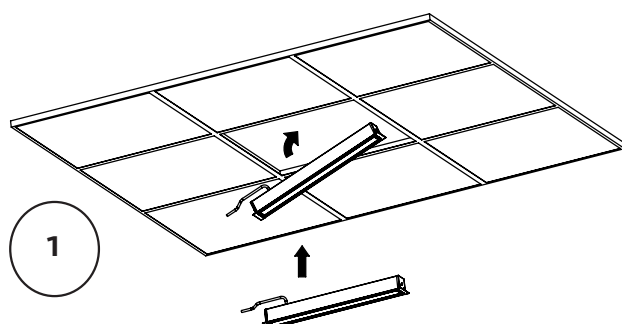
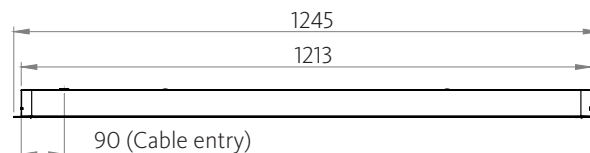
Sevede RE 625



Sevede RE 1200

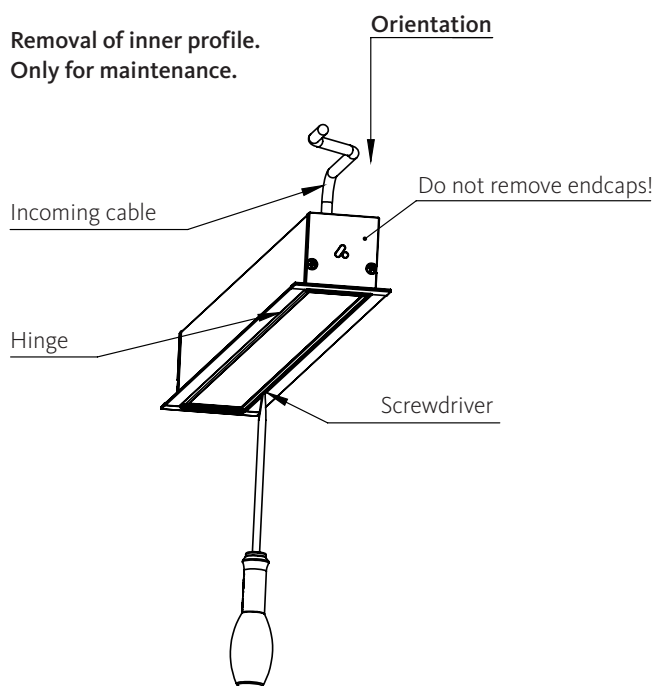


Sevede RE 1250

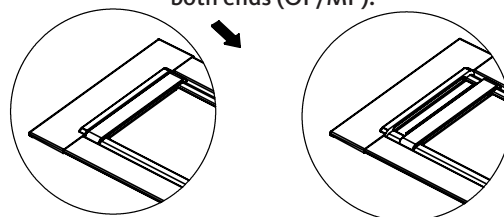


5

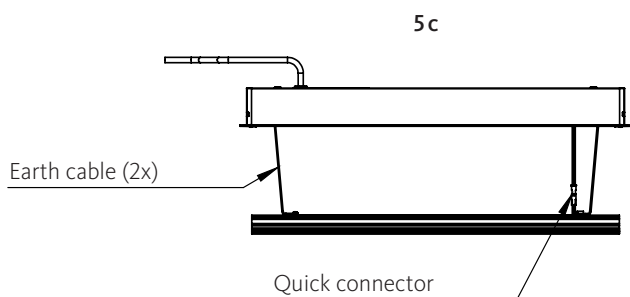
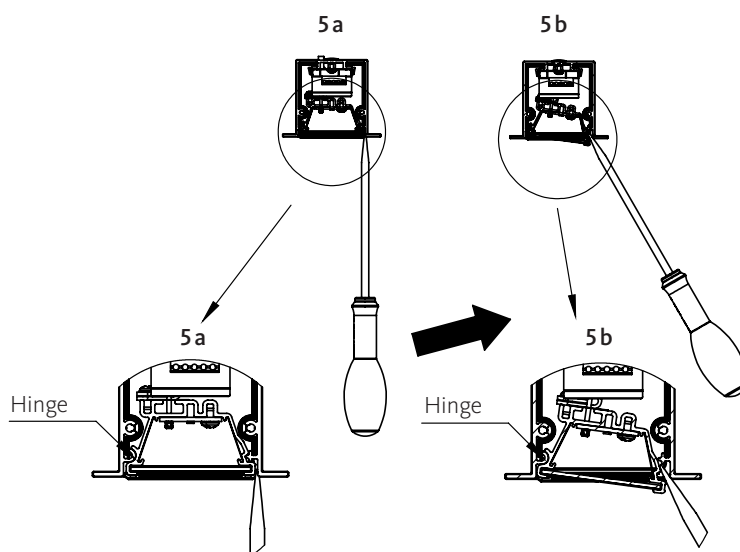
Removal of inner profile.
Only for maintenance.



Move light trap (2x) in
both ends (OP/MP).



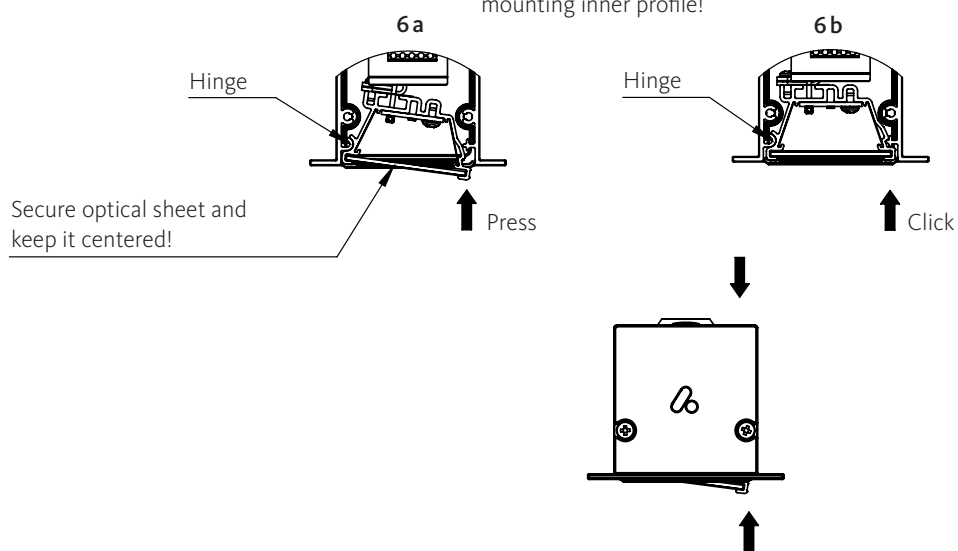
Cross section visualization.



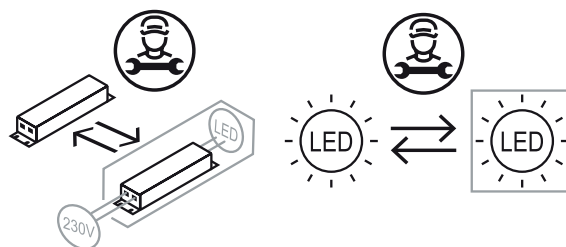
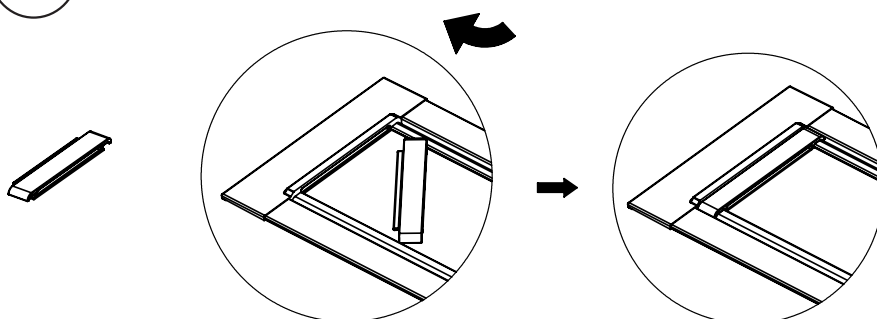
6 Attach inner profile after maintenance.

Cross section visualization.

Keep inside cables away when mounting inner profile!



7 Light trap (2x) in both ends (OP/MP).



Note: The light source contained in this luminaire shall only be replaced by the manufacturer or his service agent or a similar qualified person.

Basic insulation between supply- and control-terminals (DALI).

If the external flexible cable or cord of this luminaire is damaged, it shall be exclusively replaced by the manufacturer or his service agent or a similar qualified person in order to avoid a hazard.



Installation movie