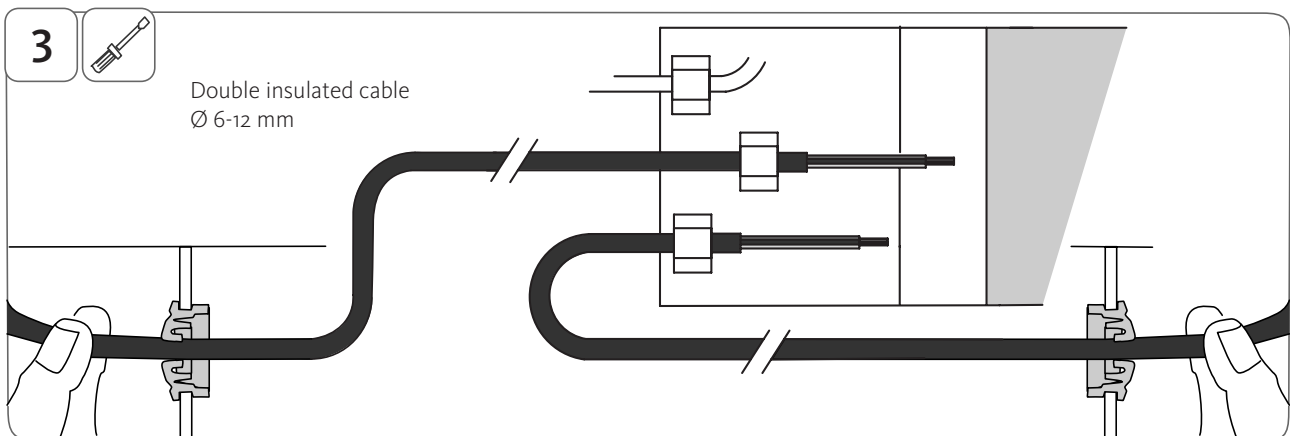
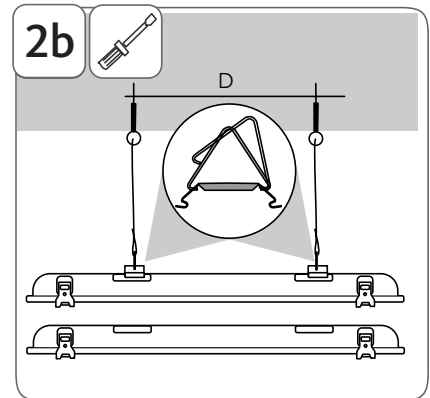
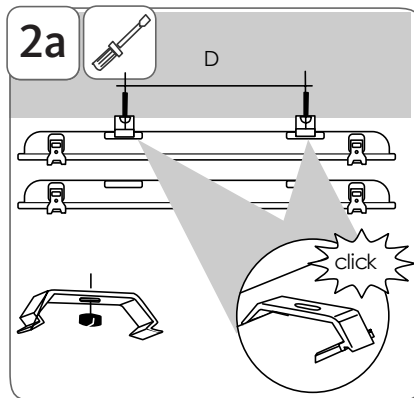
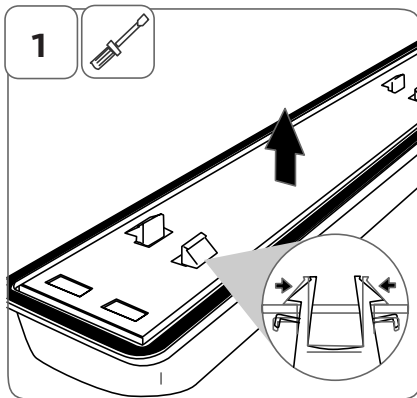
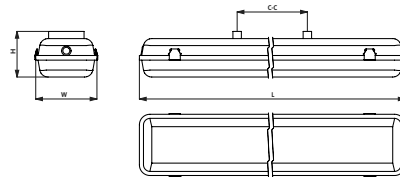


Areza Class II

Installation manual

DIMENSIONS	LENGTH (mm)	WIDTH (mm)	HEIGHT (mm)	C-C (mm)	WEIGHT (kg)
	1277	101/145	108	780-820	2,0-3,2*
	1573	101/145	108	1080-1120	2,9-4,0*

*Depending on version



UK Disconnect the unit before changing the lamp.
 F Debrancher l'appareil avant de changer la lampe.
 D Vor Austausch der Lampe Leuchte spannungsfrei schalten.



