

ActiveAhead

Installation manual

ActiveAhead solution is designed to operate without specific programming and to simplify installation of luminaires. However, it is important to understand that the solution needs some time after installation to allow it to adapt to the environment. After the learning period it is advisable to review the site for possible adjustment needs. This saves unnecessary work and enables maximal benefit from the self-learning features offered by the system.

Basic check-up: After ActiveAhead luminaires have been installed to the planned positions on the site and after power has been connected the first thing to do is a simple on/off test of each luminaire. After turning the power on, each luminaire should switch on and after a period dim down and turn off. Once turned off walk below each luminaire to see that the luminaire is switched on. If the luminaire behaves differently than described here, there might be a problem and the luminaire should be further investigated.

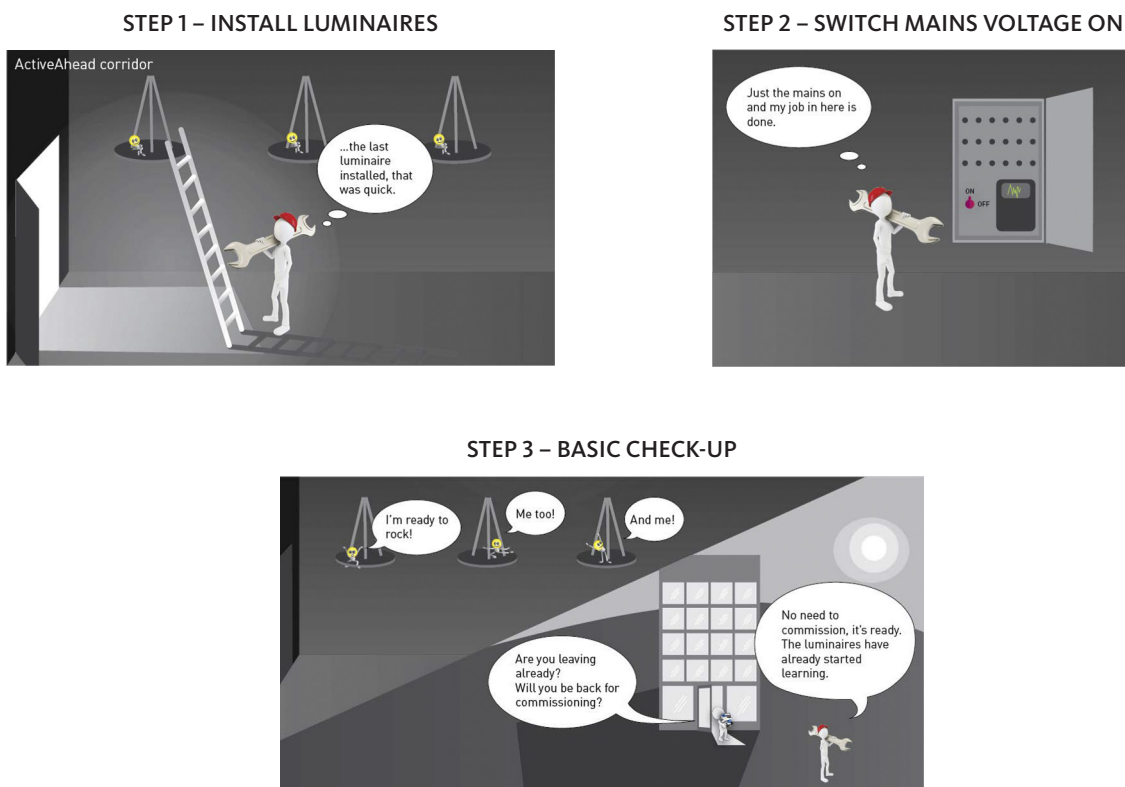


Figure 2: ActiveAhead installation – no need to configure settings (continued).

ActiveAhead® Self-Learning Solution - System Description

Just let it learn

ActiveAhead solution is designed to be ready for use from the start. Normally there is no need to program or adjust any settings. The default values programmeST 1d EintoP the ActiveAhead Control Units in each luminaire will provide comfort and energy savings for typical situations. The solution will start to detect presence and movement of persons and ambient lighting levels from the start and adapts itself to the site if given enough learning time. Depending on the layout of the office, the number of persons and amount of movement learning may take from anywhere between a day to several weeks. If the site has meeting rooms requiring wall panels those need to be configured separately.

After the self-learning period - adjust only if necessary

Typically, adjustments to ActiveAhead solution parameters are not required. Before starting to adjust any parameters, it is strongly recommended to interview the persons using the site to gain insight on light levels, timeouts, daylight harvesting and potential grouping needs. After interviewing users, the results should be analysed and only after that decisions should be made regarding which luminaires and parameters require adjustments.

ActiveAhead Control Unit

Frequency band: 2,4 GHz.

RF power: <0,1 W.