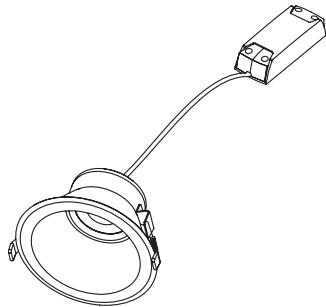
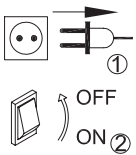


# Samo

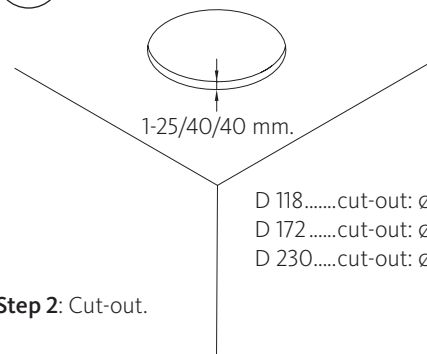
## Installation manual

1



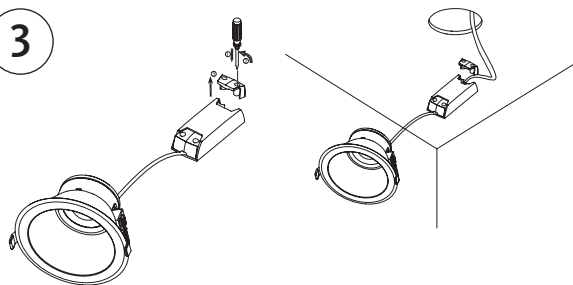
**Step 1:** Make sure to turn off the main power.

2



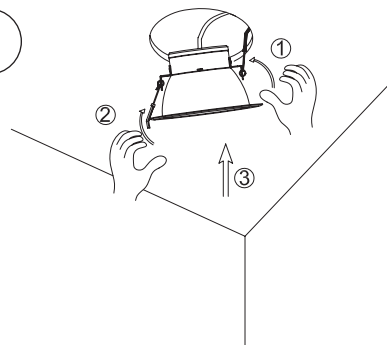
**Step 2:** Cut-out.

3



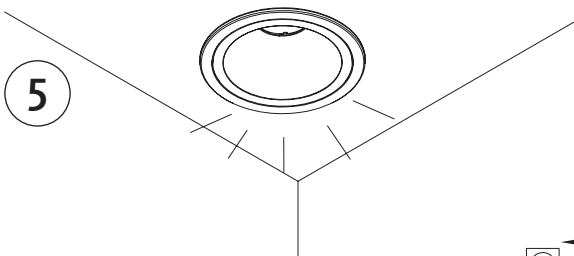
**Step 3:** Connect the power cable to the driver.

4



**Step 4:** Push the spring upward, sufficiently lift the product so that the spring can be inserted into the ceiling.

5



**Step 5:** Turn the power switch on to verify that the product is working properly.



# Samo

Samo lumen output – Osram driver OT FIT 18/220-240V/450 CS PC SC

ON ← → OFF		ON ← → OFF		OT FIT 18
PIN 1	PIN 2	Output current I rated (mA)		
Off	Off	–	225	
Off	On	–	325	
On	Off	–	350	
On	On	–	450	

Samo 150 mm (D172)

Samo 200 mm (D235)

**Stage 1 (225mA):** 8,8W 1000lm.

**Stage 1 (225mA):** 8,5 1000lm

**Stage 2 (325mA):** 13W 1400lm.

**Stage 2 (325mA):** 12,5W 1450lm

**Stage 3 (350mA):** 14W 1500lm.

**Stage 3 (350mA):** 13,5W 1550lm

**Stage 4 (450mA):** 18W 1800lm (default).

**Stage 4 (450mA):** 17,5W 1950lm (default)

## Caution

Please turn off the power circuit switch and read these procedures before installations. If you feel you do not have electrical wiring experience, have your fixture installed by a qualified licensed electrician.



## Warning

Luminaires not suitable for covering with thermally insulating material.

For indoor use only.

If the external flexible cable or cord of this fixture is damaged, it shall be exclusively replaced by the manufacturer or his service agent or a similar qualified person in order to avoid a hazard.

