

ActiveAhead  
Self-learning Lighting

Helvar





## THE UNIQUE BENEFITS INTELLIGENCE



### SELF-LEARNING

Wirelessly networked ActiveAhead nodes use a smart algorithm to learn how the space is used. They also respond to the amount of natural light in the space.

The luminaires collect data from their own sensors as well as from the other luminaires that surround them. The nodes communicate with each other and learn the patterns of how the space is used. Due to its intelligence, the lighting level remains optimal for the user at all time, giving the right lighting at the right time and place.

### ALWAYS ADAPTING

ActiveAhead continuously adapts to possible changes, for example, a wall installation or removal, or a change in the layout of a space. Continuous learning means that system adjusts lighting automatically without the need of manual re-configuration.

### FORWARD-THINKING

Lower building operation costs and increase peace of mind via advanced data analytics. Increase security and wellbeing for occupants through smart lighting logic.

ActiveAhead is designed for a data-driven future. It enables services that will improve performance and ensure spaces remain comfortable with round the clock monitoring and maintenance.

## TRULY INTELLIGENT WIRELESS LIGHTING CONTROL

**HELVAR ACTIVEAHEAD®** is a truly intelligent and scalable wireless lighting solution. Its unique self-learning capabilities give ultimate efficiency in setup and operations. ActiveAhead will continuously learn and generate insights, maximising positive impact on wellbeing and optimising your ever-evolving building. The perfect solution for offices, warehouses, stairways and parking garages.

“ As we changed the layout of our office from a small-room office layout into an activity based open plan office, we wanted the lighting level to be the same in all areas when people move from one place to another. At the same time, we also wanted to be able to control the lighting system based on personal needs.

PIRJO PERNU - Director, Facilities at YIT

# EFFICIENCY



## ENERGY SAVINGS

Compared to an LED-based switched luminaire, ActiveAhead takes comfort to a totally new level while offering substantial energy savings. In addition to increasing the lights in a predictive manner, the nodes dim the lights in a smart way depending on the space usage, thus helping to save energy.

## SIMPLE INSTALLATION

Luminaires fitted with ActiveAhead are extremely easy to install. Just fix the luminaires to their intended position and switch on the mains. No control wiring, programming or configuration is needed. Optional customisation and grouping is possible using the ActiveAhead mobile app.

“ Our YIT-staff have been really happy with this steady level of lighting and when they’ve been told that the lighting system is actual adjusting itself based on daylight, it has pleased them further. ”

# WELLBEING

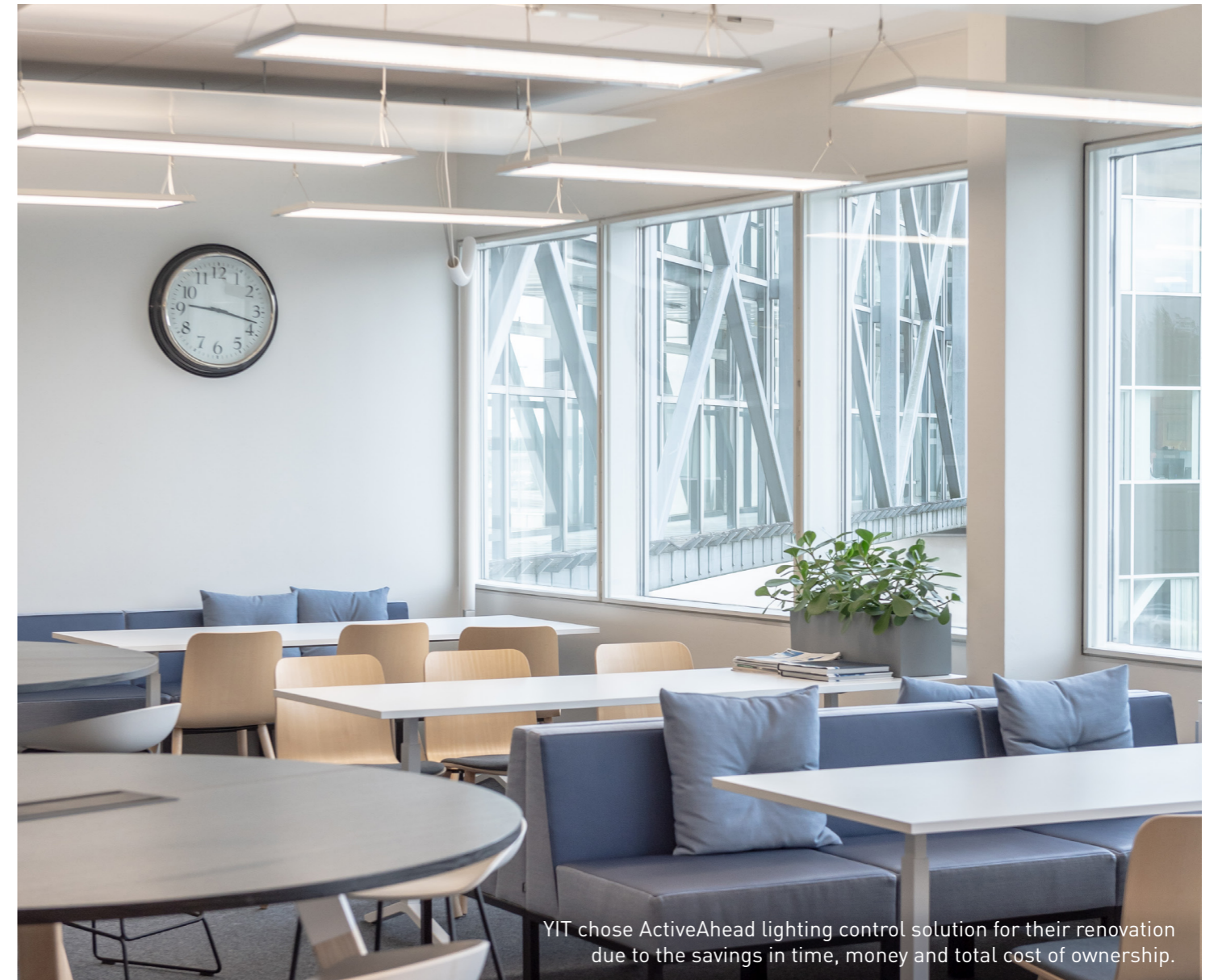
## ENHANCED COMFORT

An ActiveAhead node starts learning from the moment it’s powered up and it never stops.

With ActiveAhead, your building will always stay one step ahead. It identifies your regular patterns and routes and automatically turns on the lights as you go along. With predictive lighting, lights can be automated, and can be switched on before you arrive.

## PERSONAL LIGHTING

You can also tune the light settings on your very own desk according to your needs, allowing you to manage the light settings you prefer. This can result in a boost in satisfaction and productivity, since we all feel better in environments that are tuned to our own needs.



# ACTIVEAHEAD CASE STUDIES

## Ramboll Headquarters

Ramboll, a leading engineering, design and consultancy company, wanted to build a truly modern data driven headquarters.

Wireless, self-learning and future-proof lighting control solution ActiveAhead was selected to cover the office floors as well as the parking garage with a total of around 3000 ActiveAhead Control Units installed.

The rest of the building is controlled by the Helvar Imagine Router, making the entire site a perfect example of a hybrid wired and wireless solution. Digital services complete the Helvar offering at the Ramboll Headquarters.

## YIT Headquarters

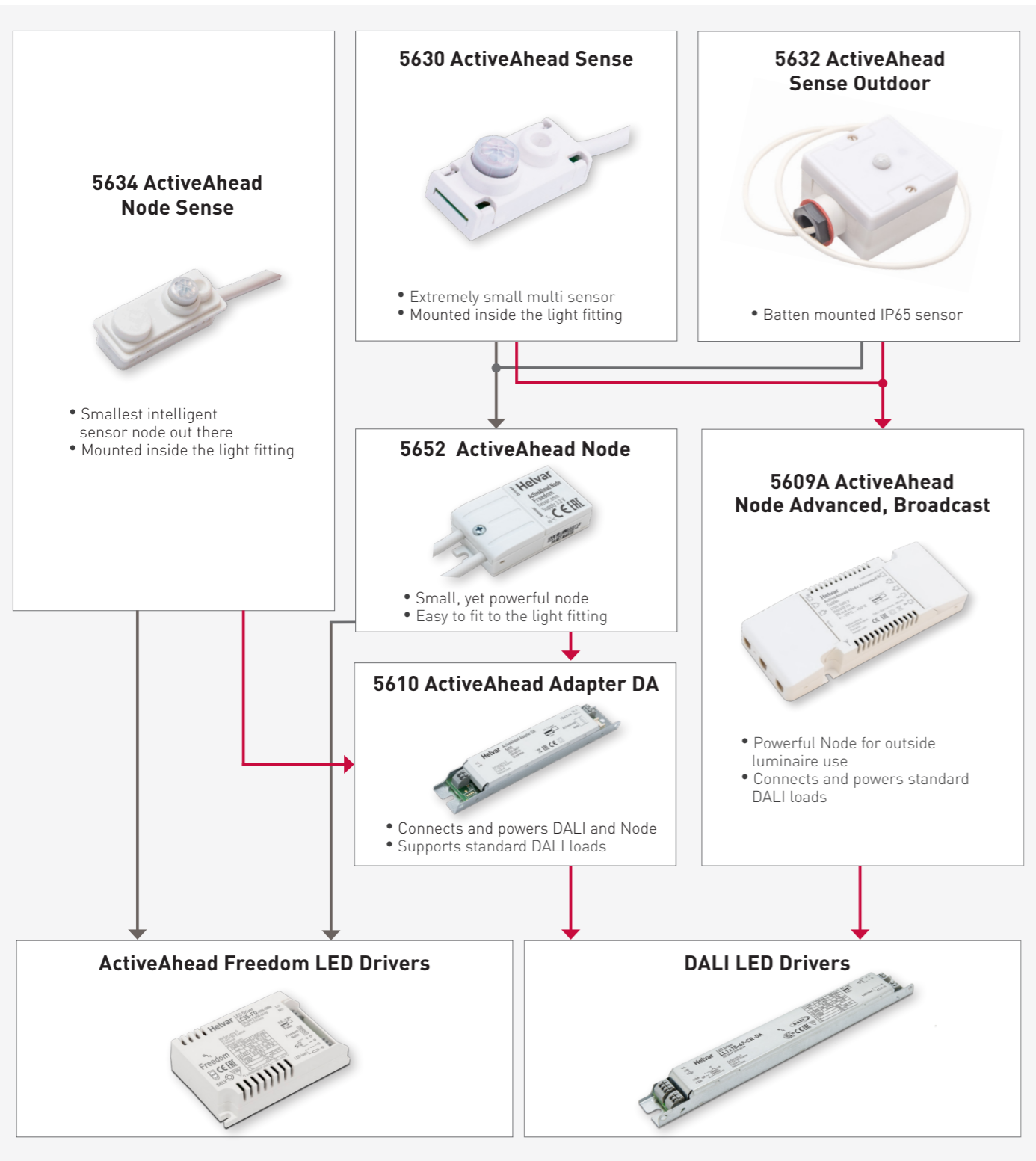
YIT, one of the largest North European construction companies, chose ActiveAhead when their headquarters was renovated.

The easy installation, setup and flexibility of the ActiveAhead solution was greatly appreciated by YIT, which is why they chose ActiveAhead also for the second part of their headquarters renovation.

These two interlinked buildings were renovated in 2018 and 2019 with over a thousand ActiveAhead Control Units per building.


# CHOOSING YOUR SETUP

Choosing the right setup for your project is easy. Based on the space and luminaire types, select the Node and the corresponding suitable LED driver. When needed pick the sensor and a possible holder for it. For spaces such as meeting rooms, add the wireless control panel and you're good to go. If necessary, fine-tune the configuration on site using the ActiveAhead mobile app.



OPTIONAL - Wall Panel


**185W Wireless Control Panel**




With no wires or cables, the self-powered panel sticks straight to the wall and is ideal for meeting room use. It speaks to ActiveAhead Nodes so you can choose four lighting scenes.

OPTIONAL - Sensor Holders

**5692 Circular Holder**



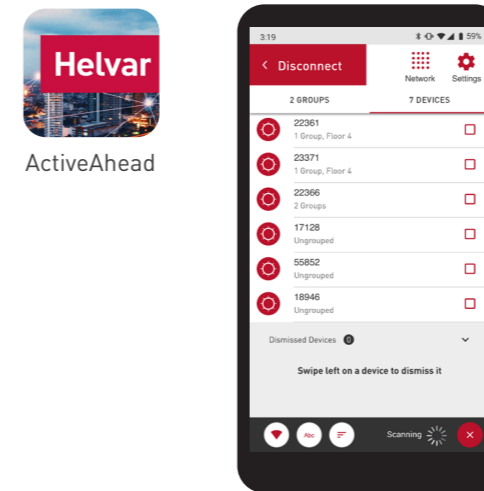
**5691 Rectangular Holder**



ActiveAhead is built to be easy and flexible. These ActiveAhead Sense holders offer more ways to mount the sensor outside or inside the light fitting.

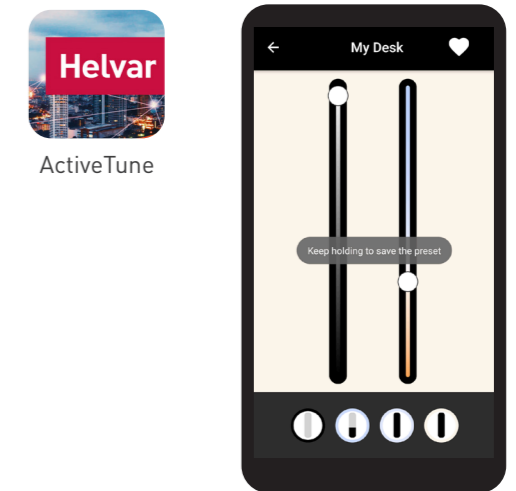
## Helvar ActiveAhead App

Download the ActiveAhead app to manage your ActiveAhead setup from your device.



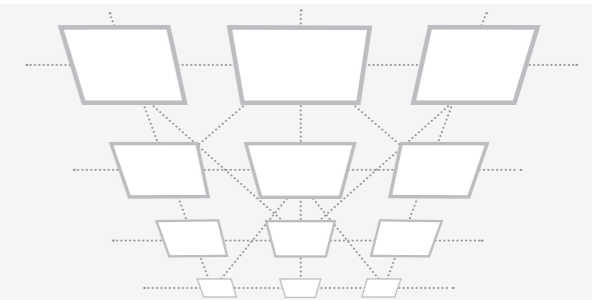
## Helvar ActiveTune™

With Helvar ActiveTune users can tune the light settings at their desk using their mobile phone.



## Bluetooth Mesh Network

Nodes connect through a Bluetooth Mesh network, a protocol based upon Bluetooth Low Energy that allows for many-to-many communication over Bluetooth radio, meaning devices can quickly transfer information between each other.





ActiveAhead lighting solution was chosen for the Ramboll Headquarters due to its unique self-learning capabilities, energy savings and future-proof, data-driven extensibility.



One of the smart building features of the Helvar system is that it enables us to collect occupancy data for all spaces. This helps us understand how our building is used and it's in line with our smart building ambition.



KARI MELANDER - Development Director, Ramboll

We're based in Finland, Sweden and the UK - but we work with Partners all over the world.

FINLAND  
HELVAR OY AB,  
Keilaranta 5  
FI-02150 Espoo  
Tel. +358 9 5654 1

SWEDEN  
Helvar AB  
Åsögatan 155  
SE-11632 Stockholm  
Tel. +46 8 545 239 70

UNITED KINGDOM  
Helvar Ltd  
Hawley Mill, Hawley Road  
Dartford, Kent, DA2 7SY  
Tel. +44 1322 617 200

See what's new at [helvar.com](https://www.helvar.com)

**Helvar**

Front cover image: Helvar Headquarters, photographer Antti Hannuniemi.